

# Cynomolgus CD3E&CD3D/CD3 epsilon&CD3 delta Protein

Cat. No. CD3-CM201

## Description

<b>Source</b>	Recombinant Cynomolgus CD3E&CD3D/CD3 epsilon&CD3 delta Protein is expressed from HEK293 with hFc tag at the C-Terminus. It contains Gln22-Asp117(CD3E)&Phe22-Ala105(CD3D).
<b>Accession</b>	Q95LI5.2 (CD3E)&Q95LI8 (CD3D)
<b>Molecular Weight</b>	The protein has a predicted MW of 36.9 kDa (CD3E) and 35.4 kDa (CD3D). Due to glycosylation, the protein migrates to 58-62 kDa (CD3E) and 44-46 kDa (CD3D) based on Bis-Tris PAGE result.
<b>Endotoxin</b>	Less than 1 EU per µg by the LAL method.
<b>Purity</b>	>95% as determined by Bis-Tris PAGE >95% as determined by HPLC

## Formulation and Storage

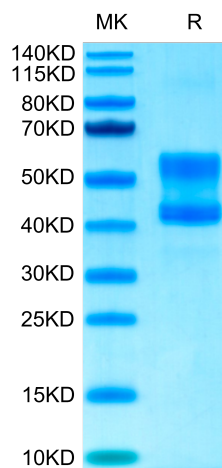
<b>Formulation</b>	Lyophilized from 0.22 µm filtered solution in PBS (pH 7.4). Normally 8% trehalose is added as protectant before lyophilization.
<b>Reconstitution</b>	Centrifuge the tube before opening. Reconstituting to a concentration more than 100 µg/ml is recommended. Dissolve the lyophilized protein in distilled water.
<b>Storage</b>	-20 to -80°C for 12 months as supplied from date of receipt. -80°C for 3 months after reconstitution. Recommend to aliquot the protein into smaller quantities for optimal storage. Please minimize freeze-thaw cycles.

## Background

T-cell surface glycoprotein CD3 epsilon&CD3 delta chain, also known as CD3E&CD3D, are single-pass type I membrane proteins. When antigen presenting cells (APCs) activate T-cell receptor (TCR), TCR-mediated signals are transmitted across the cell membrane by the CD3 chains CD3D, CD3E, CD3G and CD3Z. All CD3 chains contain immunoreceptor tyrosine-based activation motifs (ITAMs) in their cytoplasmic domain.

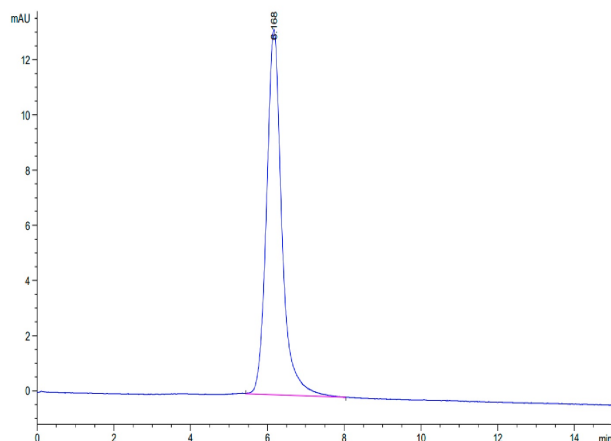
## Assay Data

### Bis-Tris PAGE



Cynomolgus CD3E&CD3D on Bis-Tris PAGE under reduced conditions. The purity is greater than 95%.

### SEC-HPLC



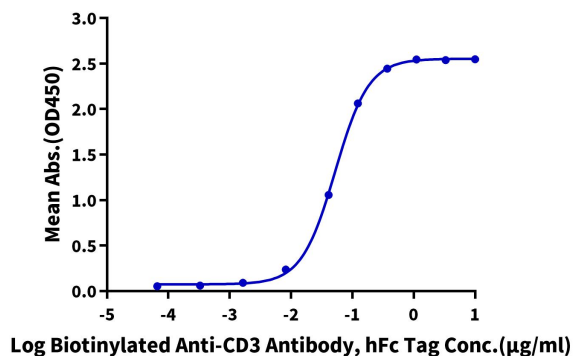
The purity of Cynomolgus CD3E&CD3D was greater than 95% as determined by SEC-HPLC.

Assay Data

ELISA Data

**Cynomolgus CD3E&CD3D, hFc Tag ELISA**

0.05µg Cynomolgus CD3E&CD3D, hFc Tag Per Well



Immobilized Cynomolgus CD3E&CD3D, hFc Tag at 0.5 µg/ml (100 µl/Well). Dose response curve for Biotinylated Anti-CD3E&CD3D Antibody, hFc Tag with EC50 of 52.6 ng/ml determined by ELISA.